

THE AMERICAN CLASSIC GREENHOUSE



TEXAS GREENHOUSE COMPANY INC.

SINCE 1948

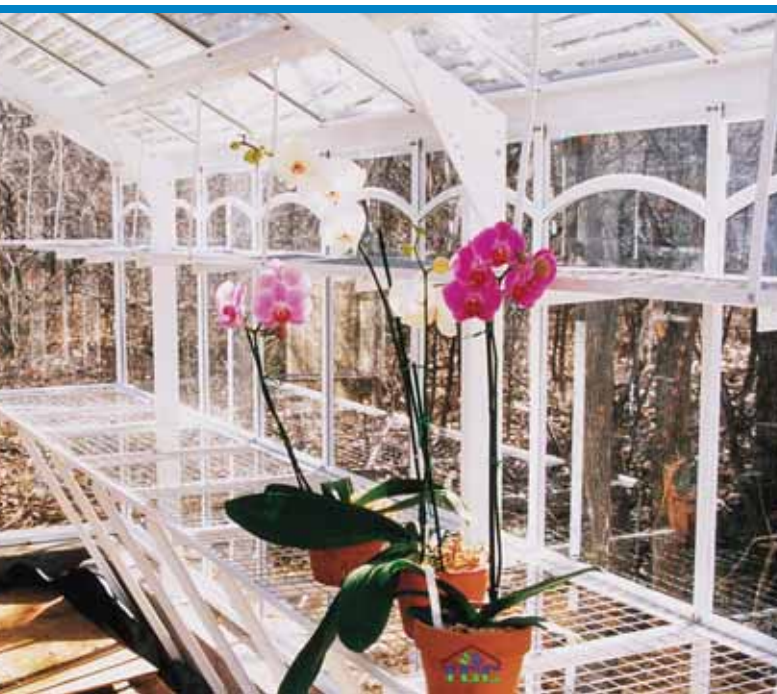
SINCE 1948...

Texas Greenhouse Company has been making innovations in greenhouse design and construction since 1948.

From our initial products, over 50 years ago, to the **American Classic** of today, Texas Greenhouse has put ownership of a beautiful, efficient greenhouse within reach of the average homeowner.



AC-1320 ATRIUM COVER WHITE



Each building produced by Texas Greenhouse meets or exceeds the standards set by the National Greenhouse Manufacturers. This association of manufacturers, along with building code officials, publish standards of quality for the greenhouse industry.





THE AMERICAN CLASSIC

Graceful curved eaves and glass, or elegant straight eaves with either glass or triple wall polycarbonate (with optional victorian ridge cresting), make the **American Classic** greenhouses as esthetically charming as they are practical.

The unique blend of form and strength-of-design, creates a wonderful growing environment able to meet and exceed any national greenhouse building code. Full-length ridge vents are standard in the **American Classic**, and all overhead glass panes are special tempered safety glass.

From private estate to the average urban backyard, the **American Classic** greenhouse allows the serious gardener to pursue that delightful interest in a beautiful environment.



ACSE-3041/24" BRONZE
WITH OPTIONAL SIDE VENT

800-227-5447



AC-2041 Mill Finish

THE AMERICAN CLASSIC FEATURES

Designed by experts for use in virtually any climate, the **American Classic** has the strength and performance capability to satisfy the most demanding horticulturalist.

The wide range of series of the **American Classic** makes owning a greenhouse affordable for the average homeowner.

Quality is our prime concern, and each **American Classic** begins with these features:

- Aluminum glazing bars suspended on a galvanized steel substructure.
- Tempered or double-strength glass throughout.
- Adjustable ridge vents along the full length of the greenhouse on each side of the ridge and vented aluminum storm door.

Simply put, the beauty and strength of the **American Classic** make it the best greenhouse. *Anywhere.*



ACSE-1720/32" ABUTTED BRONZE



ACSE-1524 BRONZE ROUND END WITH VESTIBULE



ACLS-1037/8" MILL FINISH





THE AMERICAN CLASSIC LEAN-TO

In the **greenhouse** world, a lean-to is a beautiful and serious growing environment attached to the side of a home or other structure. Made from the same exceptional materials and superiority of design as our free-standing greenhouses, the **American Classic Lean-to** gives you easy access to all necessary utilities. This convenient, highly attractive greenhouse may be the perfect choice for you.

SPECIFICATIONS

There are nine models, available in many lengths and widths. Refer to price list for complete listing and specifications on all models.



ACLS-1037/8" MILL FINISH

800-227-5447



ACLU-1220/0" WHITE



ACLS-815/24" MILL FINISH

THE AMERICAN CLASSIC 1100 SERIES

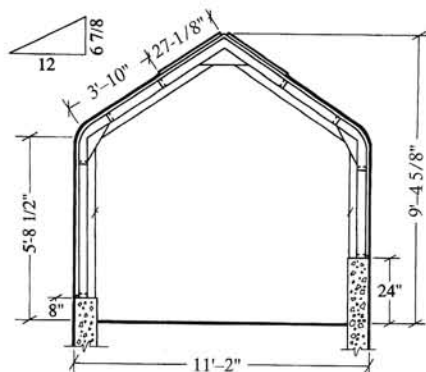
The **AC-1100** is our smallest free-standing greenhouse, but it's every bit as big in features as the largest.

Perfect for smaller yards, the **AC-1100** has plenty of space for two benches to give the active gardener ample putting room.

Sturdy construction takes hanging plants in stride and ensures years of successful gardening projects.

SPECIFICATIONS

The **AC-1100** is 11'-2" wide and is available to fit on 8" or 24" high perimeter footing or full glass-to-ground construction in these lengths (or in multiples of 20 1/4").



MODEL	LENGTH
AC-1110	10'-4"
AC-1112	12'-1/4"
AC-1115	15'-4 3/4"
AC-1117	17'-1"
AC-1120	20'-5 1/2"
AC-1124	23'-10"



ACSE 1117/8" GREEN



ACSE 1115/24" WHITE
WITH VESTIBULE SIDE ENTRY





THE AMERICAN CLASSIC 1300 SERIES

800-227-5447



AC-1317/24" WHITE

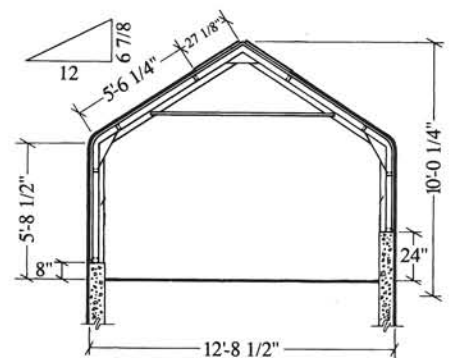


AC-1320 GREEN FINISH

A beautiful greenhouse is a splendid permanent addition to your home. The AC-1300 makes a delightful display case for your gardening successes. There's more than enough space for two side benches and a large center bench.

SPECIFICATIONS

The AC-1300 is 12' 8 1/2" wide and is available to fit on 8" or 24" high perimeter footing or full glass-to-ground construction in these lengths (or in multiples of 20 1/4").



MODEL	LENGTH
AC-1315	15' 4 3/4"
AC-1317	17' 1"
AC-1320	20' 5 1/2"
AC-1324	23' 10"
AC-1329	28' 10 3/4"
AC-1332	32' 3 1/4"
AC-1337	37' 4"



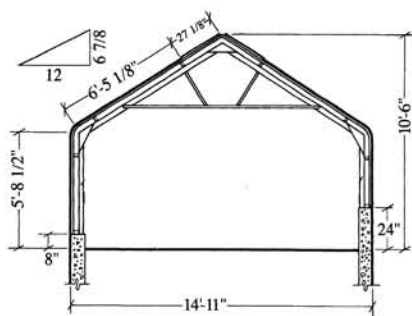
THE AMERICAN CLASSIC 1500 & 1700 SERIES

Far and away the most popular **American Classic** models, the **AC-1500** and **AC-1700** are spacious enough for variations in bench arrangements to suit serious growing projects, have ample headroom (and strength) for large hanging baskets, and plenty of walking around area. Yet they are small enough to be maintained easily.

SPECIFICATIONS

The **AC-1500** is 14' 11" wide and may be purchased to fit on 8", 24" or 32" high perimeter footing or full glass-to-ground construction in these lengths (or in multiples of 20 1/4").

The **AC-1700** is 17' 5" wide and is available to fit on 8", 24", or 32" high perimeter footing or full glass-to-ground construction in these lengths (or in multiples of 20 1/4").



MODEL	LENGTH
AC-1515	15' 4 3/4"
AC-1517	17' 1"
AC-1520	20' 5 1/2"
AC-1524	23' 10"
AC-1529	28' 10 3/4"
AC-1532	32' 3 1/4"



AC-1520/8" MILL FINISH

800-227-5447



ACSE-1517/8" WHITE

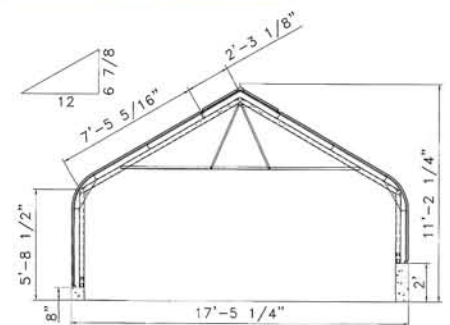




ACSE-1724 BELOW GRADE BLACK



AC-1724/8" DARK GREEN



MODEL	LENGTH
AC-1715	15' 4 3/4"
AC-1720	20' 5 1/2"
AC-1724	23' 10"
AC-1729	28' 10 3/4"
AC-1732	32' 3 1/4"
AC-1737	37' 4"



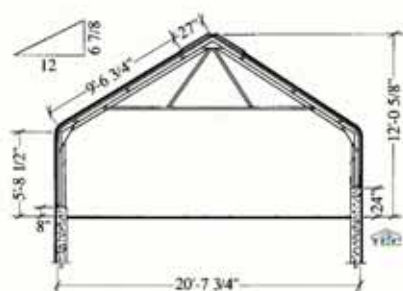
THE AMERICAN CLASSIC 2000 & 2500 SERIES

When you're serious about horticulture, whether for hobby or commercial purposes, your greenhouse needs are equally important, and the **AC-2000** or the **AC-2500** series will take care of you. They are strong

enough to protect your plant investment and beautifully designed to make your working conditions enjoyable. Create the interior that fits you best. There's room for several bench configurations.

SPECIFICATIONS

The **AC-2000** is 20' 7 3/4" wide and may be purchased to fit on 8", 24" or 32" high perimeter footing or full glass-to-ground construction in these lengths (or in multiples of 20 1/4").



MODEL	LENGTH
AC-2024	23' 10"
AC-2029	28' 10 3/4"
AC-2032	32' 3 1/4"
AC-2037	37' 4"
AC-2041	40' 8 1/2"
AC-2049	49' 1 3/4"
AC-2054	54' 2 1/2"

ACSE-2037/24" BRONZE
W/VESTIBULE SIDE ENTRY



800-227-5447



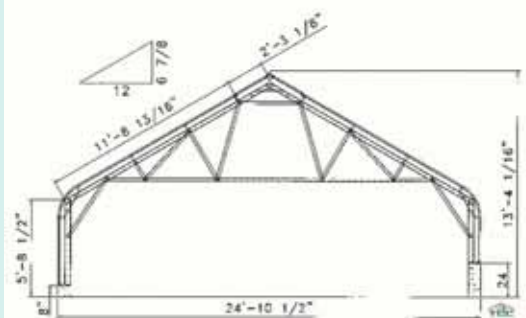
AC-2549" WHITE



ACSE-2532/0" WHITE

SPECIFICATIONS

The **AC-2500** is 24' 10 1/2" wide and is available to fit on 8", 24" or 32" high perimeter footing or full glass-to-ground construction in these lengths (or in multiples of 20 1/4").



MODEL	LENGTH
AC-2524	23' 10"
AC-2529	28' 10 3/4"
AC-2532	32' 3 1/4"
AC-2537	37' 4"
AC-2541	40' 8 1/2"
AC-2549	49' 1 3/4"
AC-2554	54' 2 1/2"

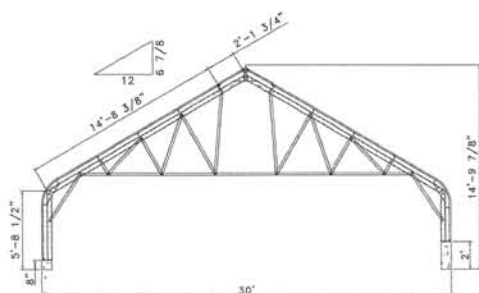


AMERICAN CLASSIC 3000 SERIES

800-227-5447



AC-3060/24" DARK GREEN



ACSE-3090/24" BRONZE

MODEL	LENGTH
AC-3032	32' 10"
AC-3037	37' 04"
AC-3041	40' 8 1/2"
AC-3049	49' 1 3/4"
AC-3054	54' 2 1/2"
AC-3068	67' 8 1/2"



ACCESSORIES • HEATING • COOLING

Our experienced consultants will guide you in determining the heating and cooling requirements for your greenhouse based on your location.

Heating: You'll find the correct electric or gas heater in our large inventory of equipment designed specifically for greenhouses.

Cooling: Effective cooling is the heart of any greenhouse climate-control system, and water-evaporative cooling is nature's own way to cool plants. Whatever your crop or climate, we can provide the proper equipment.

Galvanized Steel Substructure:

The steel substructure is the heart and strength of the American Classic Greenhouse series. Fabricated and then hot-dip galvanized for rust and corrosion prevention, the steel substructure is far stronger than aluminum.

Foundation: Any glass structure needs a solid flooring and we've made it easy for you. The normal height of the perimeter foundation is eight inches above grade (twenty-four in snow country). The depth of the foundation is determined by local building codes and practices. The specially designed sill of the American Classic series allows vertical adjustment with lateral stability. No grouting is needed.



SHADING

Your greenhouse will likely need a degree of shading during the course of a year. Install super hail-resistant long-lasting aluminum roll-up shading now, or add it on later. Or, if you prefer, choose from the variety of shade factors available in polypropylene fabric mesh.



ACSE-3057 BRONZE



AC-1524/24" GREEN

ARCHITECTURAL SPECIFICATIONS AND WARRANTY

GUIDE SPECIFICATIONS

General: The greenhouse shall be an American Classic Series Model AC _____ manufactured by Texas Greenhouse Company, Fort Worth, Texas. Width, lengths, masonry dimensions, sidewall designs and construction details shall be in accordance with plans. Only approved shop drawings shall be used to make all installations.

Scope of Work: All greenhouse parts, materials and equipment shall be furnished by the greenhouse manufacturer. Greenhouse installer shall erect the greenhouse and install all equipment. Masonry, flashing, plumbing, heating, electrical power (and control wiring), and utility connections shall be provided and installed by others.

Structure: Exterior framing shall consist of 6063-T6 aluminum extrusion alloy, supported by a hot-dipped galvanized steel sub-structure. The steel structure shall consist of truss-style ribs on 8' 5 1/4" centers (6'9" for 25# wind loads). Framing sections between steel ribs shall consist of 5 vertical rows of glass on 20 1/4" centers (4 rows of 25# wind loads). Sidewalls posts shall attach to perimeter foundation 8" above floor grade, 8" thick (9" for 25# wind loads) to the depth required by local conditions and practice. (24" high walls or higher for snow zones and special applications may be used). All bolt screws, nuts and other fasteners used in the greenhouse shall be galvanized, stainless, plated or aluminum as required by manufacturer.

Design Load: American Classic Greenhouses can be tailored to meet any current building code for wind load and/or snow load. Stamped engineering calculations are available.

Glazing: All glass shall be 1/8" annealed or 1/8" tempered glass. Roof glass is shingled 1/2" to 3/4", vertical glass shall be supported and separated by special vinyl extrusions. All glass shall be held in place with specially designed stainless steel slips. Glazing compounds used in the bedding of glass shall be

butyl glazing tape and modified acrylic and/or silicone caulking. Clear twinwall, insulated polycarbonate or fiberglass materials are available.

Ventilation: The greenhouse shall have a continuous ball and socket hinge along either side of the ridge to facilitate a single vent along each side for end to end. Vents shall be operated from a single point by a permanently lubricated worm gear driven chain vent machine, one on each side of the ridge that shall be manual or automatic (as specified) and integrated into the overall climate control system. (Side vents are available for special applications)

Doors: Doors and frame shall be extruded aluminum shapes for hanging 1 3/4" thick tubular aluminum doors (1 1/4" thick on smaller models). Doors shall be installed and pre-hung within 1 3/4" x 3" extruded aluminum framing at all openings to the size required.

MATERIALS

Sill Plate: The sill plate shall be extruded aluminum shape approximately 2 1/2" x 2", permitting lateral security and sufficient adjustment to accommodate minor foundation irregularities.

Steel Frame: The hot-dipped galvanized steel frame is to be 3 x 4.1 channel (4 x 5.4 side posts for AC2500 series; W6x9 I-beams for Fixed Frame series, extending from foundation to ridge and opposite foundation without interior supports. Welded 3/8" base plates to be secured to foundation with two anchor bolts each of the size specified on drawings.

Purlins: The purlins shall be an extruded aluminum shape specifically designed for greenhouse use, weighing 0.912 lbs. per foot.

Ridge: The ridge shall be of extruded aluminum shapes designed to incorporate the ball and socket hinge for the roof vents, weighing 1.636 lbs. per foot.

Glazing Bars: The glazing bars are an extruded shape weighing approx. 0.3 lbs. per foot measuring- 1 1/8" x 1 1/4", designed to receive stainless steel glazing clips.

Modifications: Adjustments to standard models are available upon consultation

Erection: The erection and glazing of the greenhouse and setting of climate control equipment shall be as specified in the contract.

Delivery and installation of your greenhouse is available nationwide by our skilled and professional factory installation team. Call for quotation.

WARRANTY

All products manufactured by Texas Greenhouse Company are warranted free from defects under normal use and conditions for five (5) years from the date of delivery. Warranty does not cover labor charges for replacement or repairs. Texas Greenhouse Company assumes no responsibility for installation or damage resulting thereof to material. Products sold by but not manufactured by Texas Greenhouse Company are warranted to the extent of the original manufacturers' warranties.





“SINCE 1948”

TEXAS GREENHOUSE COMPANY INC.

812 E. Northside Drive
Fort Worth, Texas 76102
817.335.5447 • 800.227.5447
www.texasgreenhouse.com